

## INSTALLATION INSTRUCTIONS FOR “CLOSED-BACK” PANELS

These instructions are for Panels:  
PANL-104A & B, PANL-106A & B, PANL-119 & 120

Panels were designed using the “PEARLWORKS MODULAR SYSTEM.”

The modular system allows panels to be linked either vertically or horizontally. We have provided a drawing below on how these panels link together. The panels themselves are relatively small (13-1/2” x 13-1/2”). This size dramatically lowers shipping cost, reduces installation time and most important lowers waste factors.

**CUTTING:** All cutting can be accomplished using a slide saw, table saw, or jig saw.

**NAILING:** Pearlworks uses and recommends 23-gauge micro-pinner. This size of nail gun provides the perfect size brad that virtually eliminates all stress cracking. Using 18-gauge or larger nail guns can and will cause stress cracking.

**GLUEING:** Any woodworking glue will work with Pearlworks products. We highly recommend using pearl glue as it is specifically formulated for resin products and offers superior adhesion.

*\*Panels must be positioned as shown for correct fit*

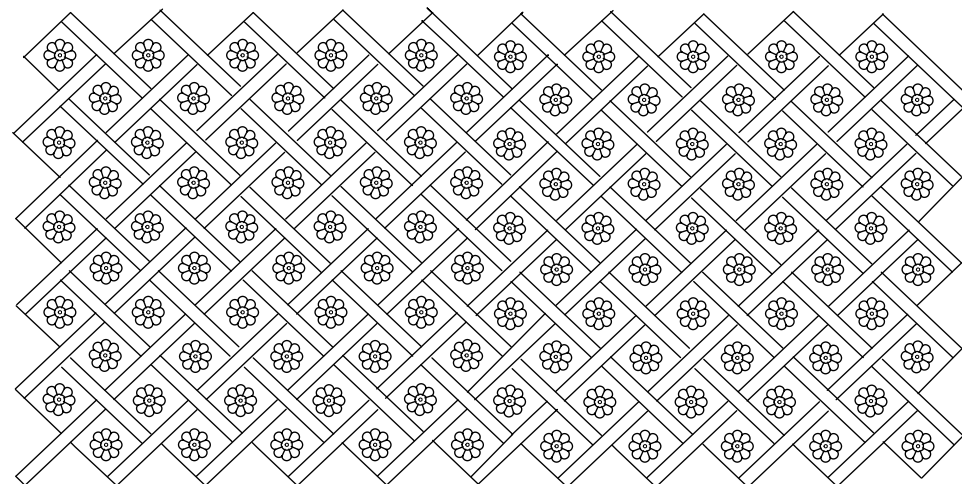
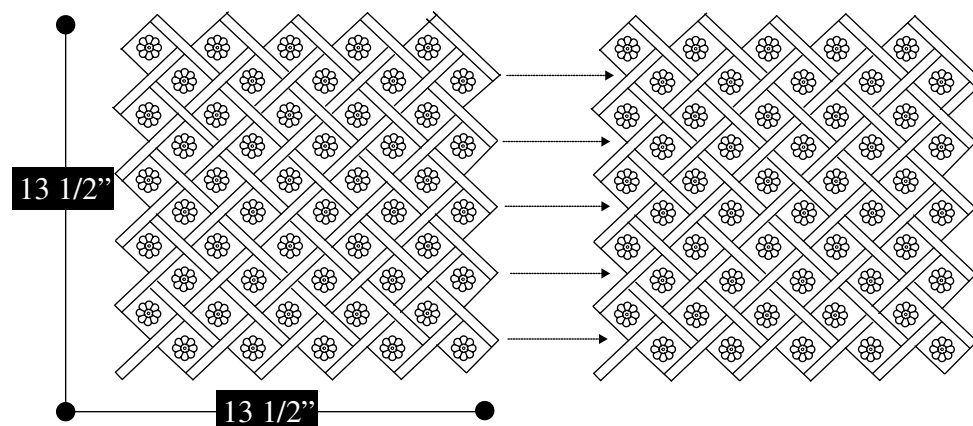


Illustration Shown:  
PANL-104B



14251 Franklin Ave Tustin CA 92780  
Office: (714) 573-1700 Fax: (714) 573-1708  
Toll Free: 855-PEARLWORKS  
Email: [info@pearlworksinc.com](mailto:info@pearlworksinc.com)