

INSTALLATION INSTRUCTIONS FOR “OPEN-BACK” PANELS

These instructions are for Open Back Panels:
PANL-105A & B

Panels were designed using the “PEARLWORKS MODULAR SYSTEM.”

The modular system allows panels to be linked either vertically or horizontally. We have provided a drawing below on how these panels link together. The panels themselves are relatively small (13-1/2” x 13-1/2”). This size dramatically lowers shipping cost, reduces installation time and most important lowers waste factors.

CUTTING: Panels are easy to cut and fit. All cutting can be done with a simple wood chisel.

(DO NOT ATTEMPT TO CUT THIS PANEL IN ANY TYPE OF POWER SAW. THE PART CAN EXPLODE WHEN THE BLADE HITS IT.)

NAILING: Pearlworks uses and recommends 23-gauge micro-pinner. This size of nail gun provides the perfect size brad that virtually eliminates all stress cracking. Using 18-gauge or larger nail guns can and will cause stress cracking.

GLUEING: Any woodworking glue will work with Pearlworks products. We highly recommend using pearl glue as it is specifically formulated for resin products and offers superior adhesion.

**Panels must be positioned as shown for correct fit*

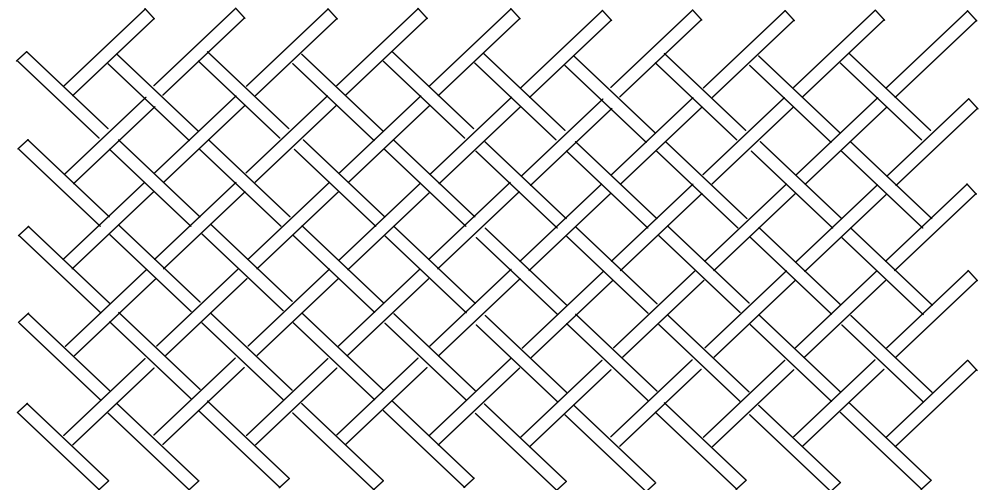
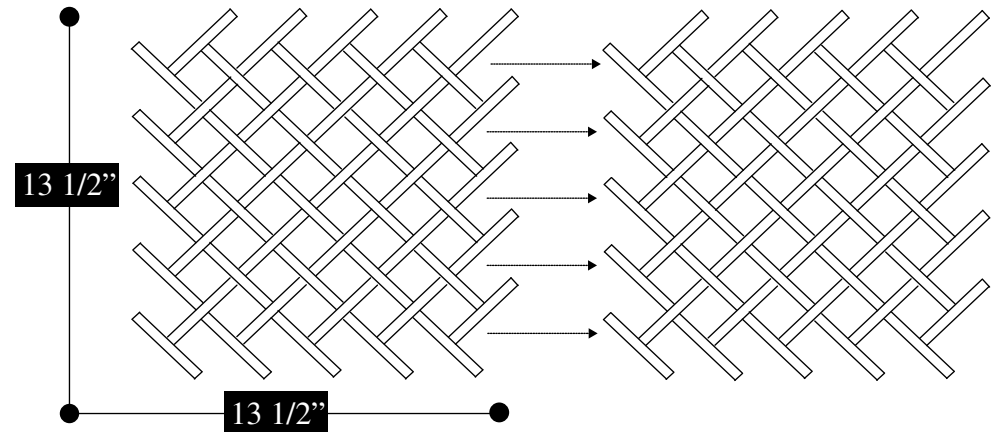


Illustration Shown:
PANL-105A



14251 Franklin Ave Tustin CA 92780
Office: (714) 573-1700 Fax: (714) 573-1708
Toll Free: 855-PEARLWORKS
Email: info@pearlworksinc.com